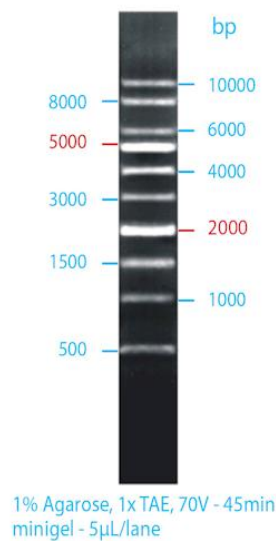


GRS Ladder 1kb

#GL051.0050 (50µg) | GL051.5050 (5x 50µg) | GL051.2050 (20x 50µg) | GL051s (trial size)
(FOR RESEARCH ONLY)



Product: GRS Ladder 1kb is a ready-to-use DNA marker supplied in loading dye, suitable for sizing linear double-stranded DNA fragments from **500bp-10000bp**, and composed of **10** chromatography-purified individual DNA fragment. All bands (except 2000bp and 5000bp) are supplied at approximately 40ng/5µl. The **2000bp** and **5000bp** bands have increased intensity (100ng/5µl) relative to the other bands for easy identification.



Applications: DNA Agarose Electrophoresis

Contents: #GL051.0050 contains 1x 50µg of GRS Ladder 1kb
#GL051.5050 contains 5x 50µg of GRS Ladder 1kb
#GL051.2050 contains 20x 50µg of GRS Ladder 1kb
#GL051s is a trial sample containing 50µl of GRS Ladder 1kb

Properties: Ready-to-use; direct loading with Bromophenol Blue and Xylene Cyanol FF as tracking dyes
10 bands (bp): 500, 1000, 1500, 2000, 3000, 4000, 5000, 6000, 8000, 10000
of which 2 internal reference bands for easy identification (bp): **2000, 5000**
Mixed concentration: 104ng/µl
Recommended loading: 2-5µl per lane
50µg of GRS Ladder 1kb allows for 100-250 lanes.

Storage: Stable at room temperature for at least 3 months. For long-time preservation store at -20°C.
Do not heat before loading.