

**Description:** Lambda DNA /BstE II Markers (without dye) are prepared by digesting Lambda DNA with BstE II, followed by heat-inactivation of the enzyme. The DNA fragments are then ethanol-precipitated and resuspended in storage buffer.

**Number of fragments:** 14

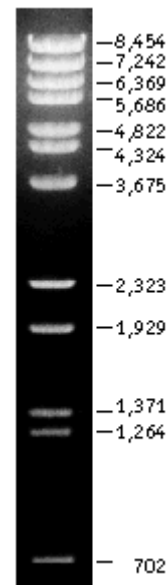
**DNA fragment length (bp):** 8454, 7242, 6369, 5686, 4822, 4324, 3675, 2323, 1929, 1371, 1264, 702, 117

**Storage buffer:** 10 mM Tris-HCl (pH 7.8), 1 mM EDTA

**Concentration:** 0.5 mg/mL (see label)

**Storage:** -20 °C

**Loading:** 1 µg of the DNA Ladder /lane.



Electrophoresis conditions:  
Gel: 2% agarose  
Buffer: 0.5x TBE  
Voltage: 10 V/cm

Ref No.	S303005	303005	303025	color
Phage Lambda DNA/ BstE II Marker	Sample size	50 µg	250 µg	purple
Datasheet	1	1	1	--

**Note:** the cohesive ends of fragments 1 (8454 bp) and 4 (5686 bp) may cause formation of extra band 14140 bp. The fragments may be separated by heating to 65°C for 3 minutes before loading the sample on the gel.