



BOCAS SCIENTIFIC

We Bring The World Of Biotechnology To You

Immunoassay Optimization

Molecular Biology Kits & Reagents

Cell Culture Media

DNA and RNA Extraction & Isolation

DNA Polymerase

Transfection Reagents

Freezer Storage Systems

Protein Markers, Ladders & Dyes

Mobicols and Spin Columns

Antibodies

Western Blotting

Versatile Cloning Plasmids

DNA Methylation Kits



CANDOR
The ELISA Experts



Mo Bi Tec
MOLECULAR BIOTECHNOLOGY



BIORON
life science



Isoheli
DNA Sampling and Purification



BOCARACK
Freezer Storage Systems



Vale
MOLECULAR BIOTECHNOLOGY

www.bocasscientific.com

(781)-686-1631

info@bocasscientific.com

About Us

We Bring The World Of Biotechnology To You

Our goal is to offer excellent solutions to drive research and discoveries backed by superior customer support.

Boca Scientific Inc. offers innovative Biotechnology products from around the world to research labs in the United States and Canada. We are proud to offer a carefully curated selection of leading edge Cell Biology, Immunology, Molecular Biology, and Diagnostics products. Our product offering includes a unique selection of research and diagnostic reagents, kits, and supplies.

Table of Contents

IMMUNOASSAY OPTIMIZATION.....	5,6
DNA/RNA SAMPLING & ISOLATION.....	7,8
LABORATORY SUPPLIES.....	9, 10, 11,12
PCR & DNA POLYMERASE.....	13, 14, 15
MOLECULAR BIOLOGY.....	15,16
HOME CAGE ANALYZER.....	17
CELL CULTURE.....	18, 19, 20
DNA/RNA PURIFICATION & ANALYSIS.....	21, 22
TRANSFECTION.....	22
ANTIBODIES.....	23
PROTEIN MARKERS & DNA LOADING DYES.....	24
CELL BIOLOGY.....	25
CUSTOMER TESTIMONIALS.....	26



IMMUNOASSAY

OPTIMIZATION

www.bocascientific.com

(781)-686-1631

info@bocascientific.com



CANDOR Bioscience provides an outstanding line of high-quality reagents for immunoassays and ELISA development. These reagents greatly improve the accuracy and stability of the assay, allowing for reliable results, simplified assays, and reduced processing times.

Optimizers

Reduce Interference and Increase Reliability with Optimization Buffers and Diluents

LowCross-Buffer

- Assay diluent and Optimizer
- Reduces non-specific binding and interference

Assay Defender

- Reduces interference caused by high affinity antibodies
- Minimizes all types of interference unlike typical HAMA blockers

LowCross HRP-Stab

- Prevents non-specific binding, matrix effects, and cross-reactivities
- Stabilizes HRP-conjugates for several years



Additional offerings include:
LowCross-Buffer MILD, LowCross-Buffer STRONG, Sample Buffer, Coating Buffer, Washing Buffer, & Stripping Buffer.

IMMUNOASSAY

OPTIMIZATION

www.bocascientific.com
(781)-686-1631
info@bocascientific.com

Blockers

Prevent Non-specific Binding and Cross-reactivities
and Improve Assay
Sensitivity

The Blocking Solution

- Based on highly purified casein
- Ideal for assays that require high reproducibility and low coefficients of variation

PlateBlock

- Reduces false positives for serological assays
- Prevents non-specific binding, cross-reactivities, and lowers background

SmartBlock

- Based on chemically modified peptides
- Economical, reliable alternative to blockers containing BSA



ReadyTector®

Ideal for western blotting

ReadyTector® includes everything you need for fast, all-in-one immunodetection. With one solution containing all components required, the entire process takes place in a single step, in addition to washing with the included wash buffer.

Stabilizers

Preserve the Functionality of your Antibodies,
Conjugates, and
Antigens for Long-term Storage

Antibody Stabilizer

- Conserves structure of proteins and antibodies to prevent loss of function
- Avoids the need for freezing and thawing

Liquid Plate Sealer

- Coated molecules' shelf life is extended to 1-3 years
- Seals plates with uniform, soluble stabilizing layer without affecting the assay

HRP-Protector

- Provides critical stability for several years
- Can be used directly as an assay buffer for incubating HRP-conjugates

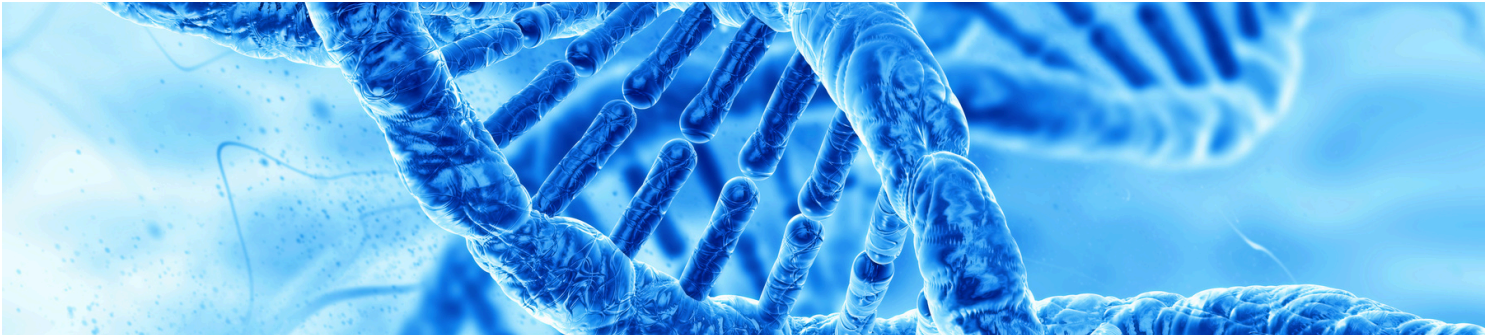
****Additional Blocker & Stabilizer offerings Available.***

DNA/RNA SAMPLING & ISOLATION

www.bocascientific.com

(781)-686-1631

info@bocascientific.com



DNA/RNA Buccal Swabs

- High yield buccal cell DNA/RNA collection
- Unique swab matrix and quick release surface maximizes efficiency
- Non-invasive alternative to blood collection
- For human and veterinary use
- Easy to handle and quick to use

Stabilization Kits

- Instant room temperature stabilization
- Easy to use in field and clinical settings
- Prevents cross-contamination risks
- Maintains DNA/RNA integrity for improved yields and purity



Isolation Kits

Designed for high purity DNA or RNA extraction from buccal swabs. These kits integrate various isolation methods, ensuring that you gain maximum yields. The extracted DNA or RNA is suitable for demanding downstream applications.



DNA/RNA SAMPLING & ISOLATION

www.bocascientific.com

(781)-686-1631

info@bocascientific.com

GeneFix DNA/RNA Saliva Collectors

- Integrated buffer for instant stabilization
- Unique funnel design prevents spillages or buffer flow back
- DNA stabilized at room temperature for 5 years and viral RNA stabilized for 5 days
- Suitable for field, home and clinic-based sampling

***Assisted version available**



Saliva DNA/RNA Isolation Kits

- **Xtreme RNA Isolation Kit:** spin-column based RNA purification kit
- **GeneFix Saliva-Prep 2 DNA Isolation Kit:** precipitation based method to quickly and easily isolate DNA from samples
- **Salivalyse Direct-to-PCR Kit:** rapid Direct-to-PCR alternative to traditional, more time consuming DNA isolation
- **Xtreme DNA Isolation Kit:** silica membrane-based spin column DNA purification kit

GeneFix Saliva Microbiome DNA Collectors

- Ambient Storage - no expensive storage or transport
- Instant Stabilization - provides a snapshot of the saliva microbiome
- No trace DNA contamination - Reliable results

GeneFix RNA Saliva Collectors

- Stabilizes RNA from the moment of collection for 2 weeks
- The device is fully specified for sample transport and storage

**Assisted version available.*

Isohelix SaliFix™ Saliva Swab DNA Collection Kit

Designed for collecting and stabilizing saliva samples in various environments these are ideal for manual or automated processes!

Swab-Catcher™ tube

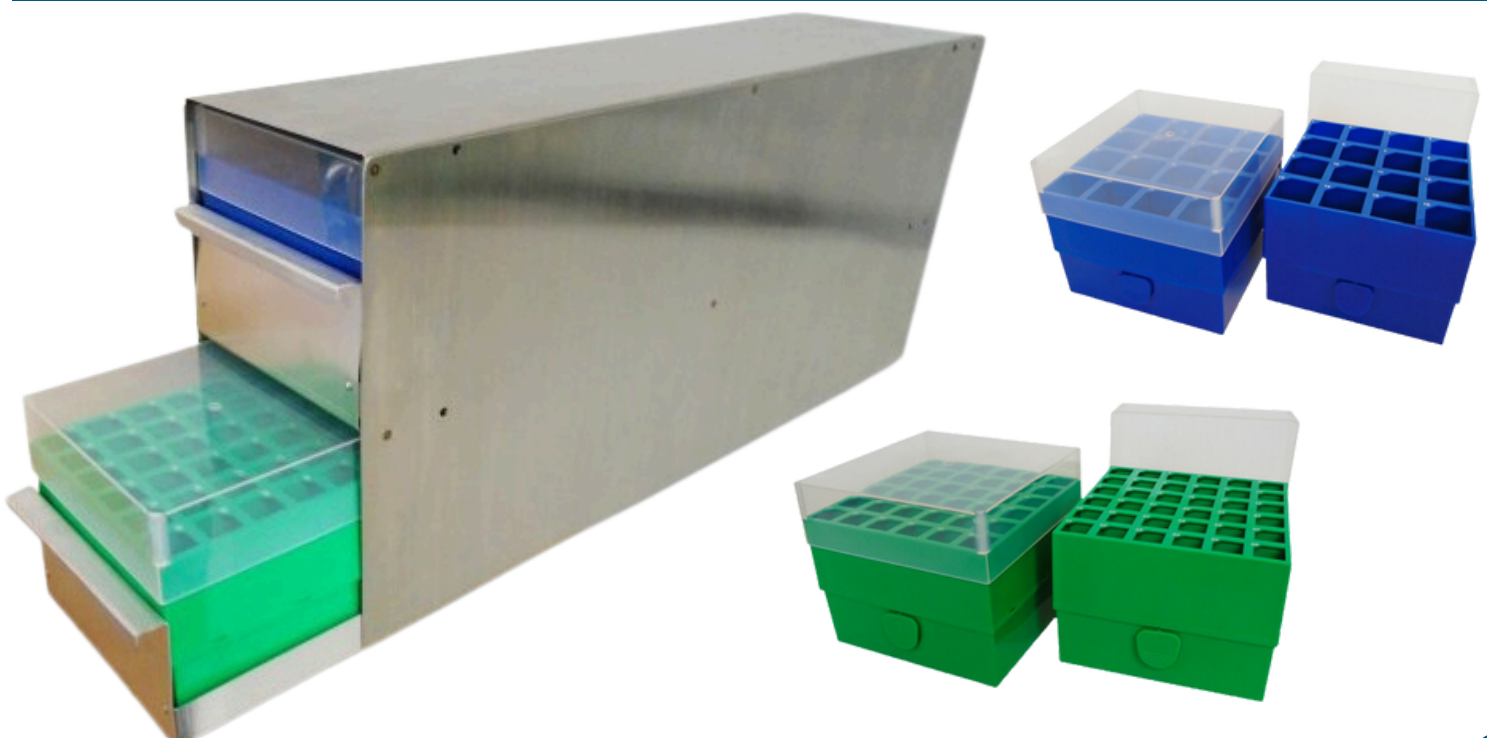
The unique design consists of a cap attached to a swab to relieve the tedious process of manually removing the swab.



Freezer/Refrigerator Storage Systems

A complete solution for storing biological samples in low temperature freezers. These sturdy stainless steel racks include sliding drawers fitted with plastic storage boxes designed for -80°C storage. Dedicated systems are available for 1.5ml–2.0ml microtubes, cryovials, and 15ml and 50ml conical centrifuge tubes.

Custom sizes are available upon request.



Mobicols & Lab Columns

Versatile 1ml columns for separation, isolation, treatment, and purification. Functioning as both spin and affinity chromatography columns, Mobicols can be used to make your own spin/affinity columns with the matrix of your choice.

- **Mobicol "F" Column** - Recommended for gravity flow; leak-proof outlet plug
- **MobiSpin Column "F"** - Recommended for spinning; leak-proof outlet plug
- **Mobicol "Classic"** - For gravity flow or spinning



Filters & Accessories

Upper and lower filters with pore sizes 10 μm , 35 μm or 90 μm are available for Mobicols.

Multiple accessories designed for use with mobicols in affinity chromatography are also available, including luer-adapters and stopcocks.

Imaging Tools

Selection of cell imaging dishes, chambers, plates, and imaging slides feature optimized surfaces for the best optical performance.



Electroporation Cuvettes

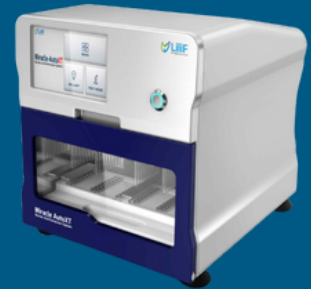
Designed to maximize molecular electroporation and electrofusion efficiencies for Bacteria, Yeast, Insect, Plant and Mammalian cells.

The cap design improves aseptic handling techniques and the positive seal reduces potential aerosol and contamination issues. The molding process ensures extremely fine tolerances so that the electrodes have a consistent gap and parallel configuration.



Automated Nucleic Acid Extraction System

Miracle-AutoXT provides quick, efficient nucleic acid extraction with up to 32 samples processed simultaneously. This system offers high yields and high purity DNA/RNA via bead-based extraction. Extraction is completed in as little as 20 minutes! We also offer kits optimized for use with this system.



B-BOX Blue Light LED Epi-Illuminator

A long wavelength, blue light LED epi-illuminator that can greatly ease the routine chore of gel extraction, enabling easy visualization and gel cutting even in bright ambient light. Achieve improved cloning efficiency. B-Box offers greatly improved safety for users due to its non-UV light source, non-carcinogenic DNA and protein dye, and low operating voltage. Amber filter goggles are included.



Tissue Culture Flasks

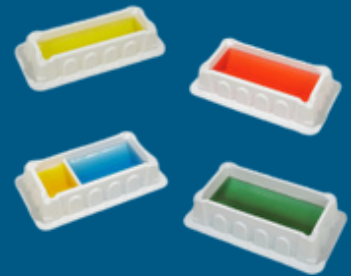
TC-treated Tissue Culture Flasks provide even and consistent cell growth for optimal proliferation of cells due to their distortion free, completely flat growth surfaces. Graduated with a frosted writing area and a wide, angled neck design for complete access when washing and retrieving cells.





Solution Reservoirs

Our multi-channel solution reservoirs are compatible with a wide-range of multi-channel pipettes. These reservoirs are designed to enable easy drip-free pour-off of unused reagents and solutions. This range of reservoirs also feature spouts in each corner. Lids are also available to mitigate the risk of debris or airborne contaminants!



Microtube Racks

These useful racks are designed to keep your 1.5mL to 2.0mL microtubes neatly and conveniently organized. They are compatible with conical and self-standing microtubes and all wells have raised numbers for quick and easy identification. They are made of autoclavable polypropylene and can be ordered in a single color of your choice or rainbow packs.

Ice Racks

These Ice Racks feature a removable tube tray that allows the blue base to be filled with crushed ice or other temperature-controlling materials. Temperature-sensitive samples and assays in microtubes can be processed with an extra degree of temperature stability. These boxes are ideal for use with screw-cap or snap-cap microtubes from 0.5mL to 1.5/2.0mL.

Cryogenic Storage Boxes

These storage boxes are designed for ultra-low temperature storage. They hold 1.2mL to 2.0mL cryogenic storage vials. These are a great alternative to cardboard boxes and can be autoclaved! They are built to last and can withstand temperatures ranging from -196° to $+121^{\circ}\text{C}$.



PCR & DNA POLYMERASE

www.bocascientific.com
(781)-686-1631
info@bocascientific.com

DNA Polymerases

A wide range of high quality, common and modified DNA Polymerases for both Standard and Hot Start PCR.

A few of our high quality DNA Polymerases:

- **SD Polymerase:** novel, thermostable enzyme for PCR and isothermal amplification with strong strand displacement activity
- **SuperHot Taq Polymerase:** highly purified polymerase for all PCR applications
- **SuperTaq:** recombinant Taq polymerase offering high processivity and purity



Reverse Transcription

Tth Polymerase has intrinsic Reverse Transcription activity and no RNase H activity, making it an excellent choice for RT-PCR.

Smart One RT-PCR Master Mix offers a convenient, ready-to-use format for probe-based RT-qPCR applications.

DNA & Other Enzymes

Used as substrates for restriction endonucleases.

Phage T7 DNA- is isolated from an infected E. coli strain
Proteinase K- broad-spectrum protease for nucleic acid purification.

dNTPs

Prepared with high purity to ensure accurate results in the most sensitive PCR-based assays. These dNTPs are provided ready-to-use, with their high purity confirmed by HPLC analysis.

Master Mixes

Ready-to-use and feature our high quality Bioron polymerases for PCR applications.



AptaHotTaq

HotStart DNA Polymerase which uses DNA-Aptamers instead of antibodies for PCR reactions at room temperature.

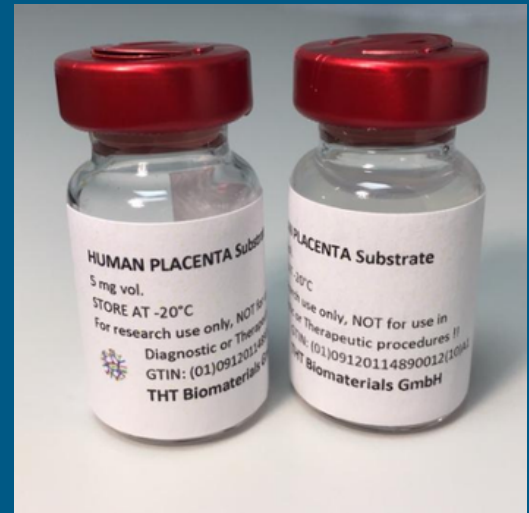
SmartTaq

Recombinant Taq Polymerase ideal for assays with high Multiplex grade or inhibitor residues.

Human Placenta Proteins

We offer Human Placenta Proteins, made in Germany, that are offered in both a substrate and Collagen format.

- Human Placenta Substrate is a highly purified bioactive ECM mixture. Ideal for the growth and cultivation of human cells.
- Human Placenta Collagen IV is unique because it exists only in basement membranes. BSA free, Human Placenta Collagen IV is prepared from Human Placenta Tissue and shows the highest bioactivity with low DNA remnants. *This is also available in Human Collagen Placenta I.*



Cot I Human DNA

Cot I Human DNA is made in Germany and prepared from human male placenta DNA. This high quality DNA blocking reagent, decreases false positives in Microarrays, In situ hybridizations and Southern blots. This product is virus-free and phenol treated.

We offer both fluorometric and photometric versions.



PCR & DNA POLYMERASE

www.bocascientific.com
(781)-686-1631
info@bocascientific.com

PCR PreMix Kits

High quality, ready-to use kits with all components required for PCR in a dried pellet format in each tube.



RT-PCR Premix Kits

Provide fast, sensitive, reliable RT-PCR. The premix format greatly simplifies the task of RT-PCR.



Polymerases & Master Mixes

Improve sensitivity and efficiency in a range of PCR and amplification tasks.



qPCR Solutions

Optimized ready-to-use solution for real-time quantitative PCR assays, incorporating SYBR Green I dye.



MOLECULAR BIOLOGY

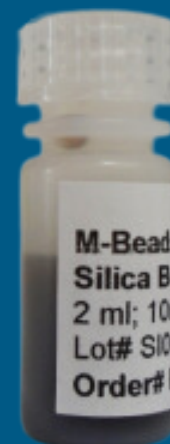
www.bocascientific.com
(781)-686-1631
info@bocascientific.com



Magnetic Silica Beads, Separators & Kits

Our selection of magnetic silica beads provides a versatile tool for separation, concentration and purification of biomolecules from a variety of types of samples. As no columns or centrifugation steps are required, magnetic beads are ideal for high-throughput and automated applications.

A wide range of beads are available with different sizes and surface and binding properties.



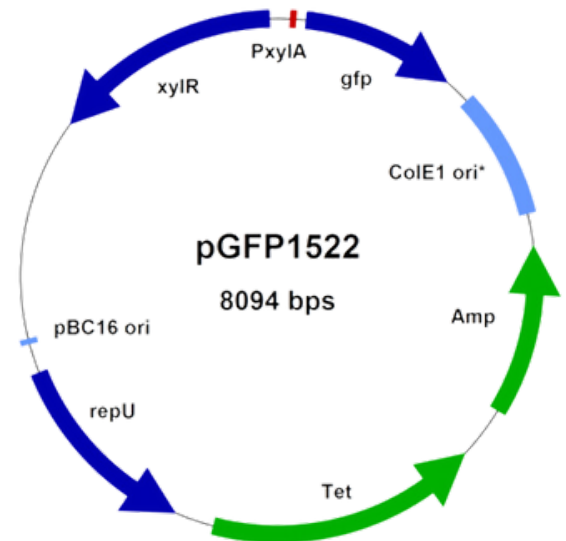
MOLECULAR BIOLOGY

www.bocascientific.com
(781)-686-1631
info@bocascientific.com

Vector Systems

A selection of cutting edge vector systems ideal for recombinant protein expression. We offer a range of easy-to-handle tools for efficient gene expression in microorganisms such as *B. megaterium*, *B. subtilis*, *L. lactis*, *E. coli*, and yeast. This range includes vectors and host strains including ready-to-use protoplasts for *Bacillus megaterium*.

**Additional Vectors Available On Our Website*



LPS Extraction Kit

This kit can extract LPS from even a small volume of bacterial cells and gives reproducibly high yields of LPS.

LPS Extraction Kit separates and purifies Lipopolysaccharides (LPS) present in the outer wall of gram-negative bacteria.

HOME CAGE ANALYZER

www.bocascientific.com

(781)-686-1631

info@bocascientific.com

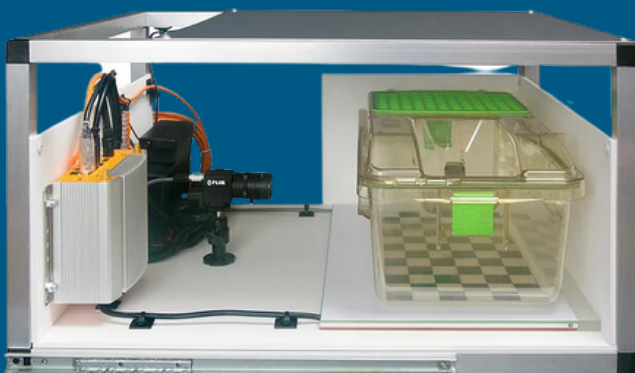


ActualHCA (Home Cage Analyzer)

24/7 Data Capture and Analysis of Complex Behaviors of Group Housed Rodents in their Real Home Cage!

ActualHCA provides automated analysis of discrete behaviors, body temperature, and locomotor activity, tagged to each individual animal within their normal social group. Isolation of individual animals is no longer needed to collect rich behavioral data.

The HCA technology is a modular, scalable, and universal solution which can be installed in all animal facilities. As an add-on to existing rodent home cage systems, the Home Cage Analyzer is compatible with a range of rat and mouse homecages and racking systems, including IVC systems.

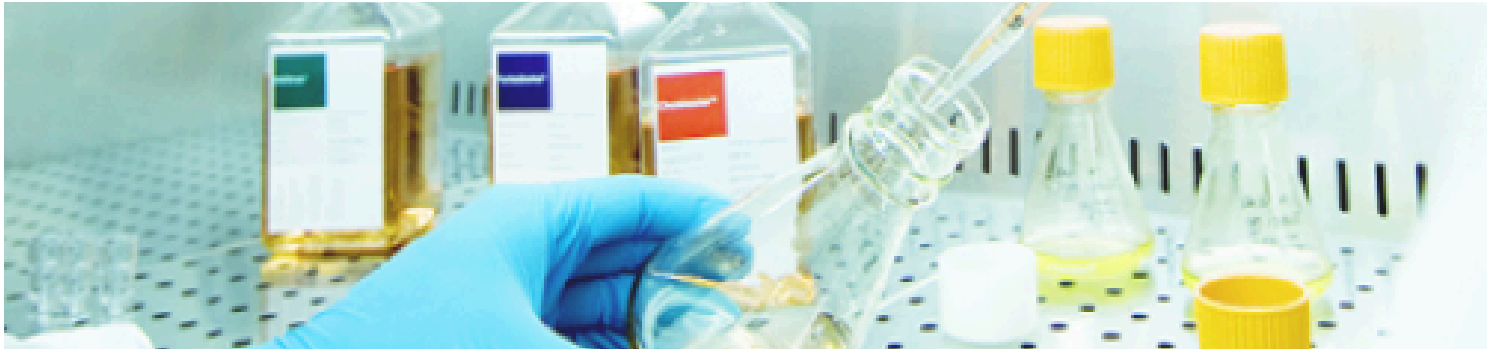


ActualHCA Mouse Desktop



ActualHCA Rat Desktop

**Mouse Rack, IVC Rack, & Rat Rack Also Available.*



Cell Culture Technologies Media

Over 300 varieties of Custom Media are offered. Our custom media is free of proteins, peptides, complex additives, and animal-derived components.

Custom media is provided either ready-made aseptically filled in 500ml bottles or as liquid concentrate kits for reconstitution in tissue culture water prior to sterile filtration.

*We also offer a selection of standard media

Happy Cell ASM 3D Culture Medium

A unique cell culture reagent that permanently suspends cells without the restrictions of artificial matrices, allowing for more natural spheroid and organoid formation. Easy labeling, washing, and dosing of cells. Improves viability and reduces doubling time. Consistent animal-free formulation, free of growth factors and cytokines.



BriClone Hybridoma Cloning Additive

Greatly improves the efficiency of hybridoma cell cloning in the post-fusion stages of hybridoma production without batch to batch variation.



Mycoplasma Detection

Our e-Myco kits are PCR-based assays designed to detect Mycoplasma and determine the species.

With strong sensitivity, multiple internal controls, and high reproducibility, these kits provide reliable results.

GRiSP Culture Media & Additives

Our cell culture media from GRiSP Research Solutions includes standard media and Auto-Induction Media supplied as a dehydrated powder.

Terrific Broth, Auto-Induction Medium is Supplemented with glucose and alpha lactose for auto induction of protein expression.



Growth Supplements

Animal-free, serum-free high quality growth supplements and attachment factors for the scale-up of cellular agriculture.



- Proliferum LSR 10X
- rh-Victronectin

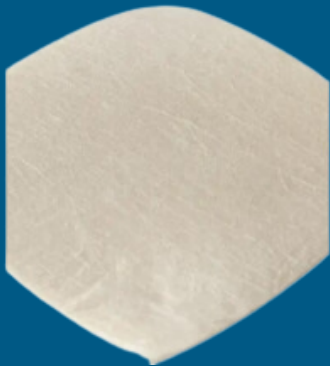


Gelatex HaloSpin Scaffolds

Our range of pharma grade products for 3D cell culture and tissue engineering, aim to revolutionize nano-fiber technology and promote cell attachment, growth, and differentiation.

Gelacell™ scaffolds are made using novel, patented HaloSpinning technology to closely mimic the natural extracellular matrix. These scaffolds offer the perfect combination of flexible hydrogels and hard, structured scaffolds.

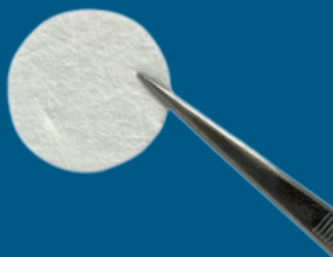
Available As:



10x10 Scaffolds



Well Plate with Scaffold



**Gelacell™ Scaffold
Inserts**



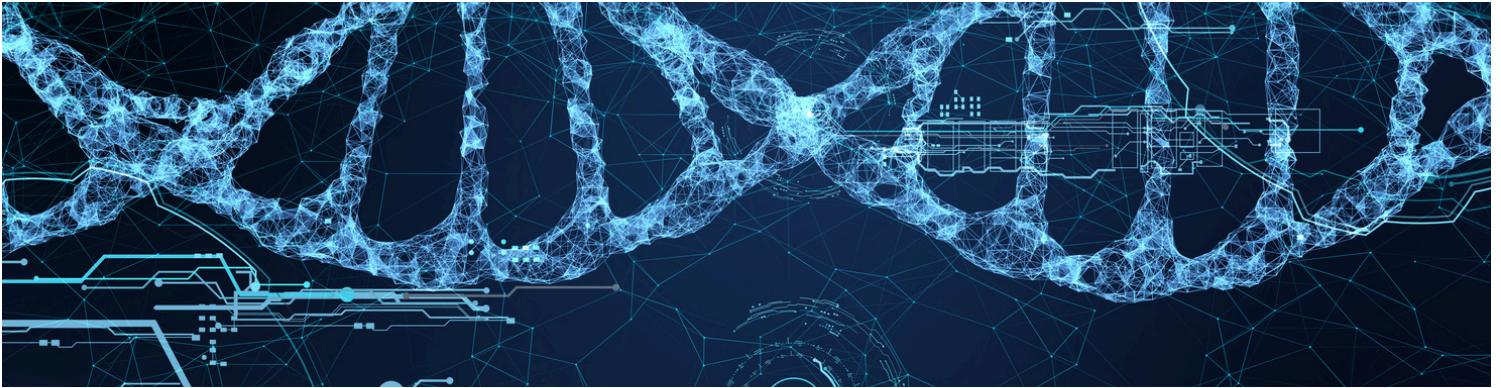
**Well Plates with
Cell Crowns**

DNA/RNA PURIFICATION & ANALYSIS

www.bocascientific.com

(781)-686-1631

info@bocascientific.com



DNA Methylation Kits

The EpiMelt DNA Methylation Testing Kits are based on MS-HRM technology and provide high accuracy and convenient tests for epigenetics research.

Assay and Controls are offered for a wide range of genes. EpiMelt Assays provide reliable detection of aberrant gene methylation using MS-HRM. EpiMelt Controls provide both non-methylated controls and fully methylated controls.



Aqua Reagents

Aqueous solution-based reagents designed to preserve and extract DNA, RNA, and proteins from challenging specimens such as bacteria, plant, and animal tissues. As well as frozen whole blood, feces, and saliva.



Nucleic Acid Purification Kits

Purification kits based on the best available technologies, including enzymatic, spin column, and beads-based purification methods. These kits provide high yields of DNA/RNA with fast and efficient protocols.



DNA/RNA PURIFICATION & ANALYSIS

www.bocascientific.com
(781)-686-1631
info@bocascientific.com

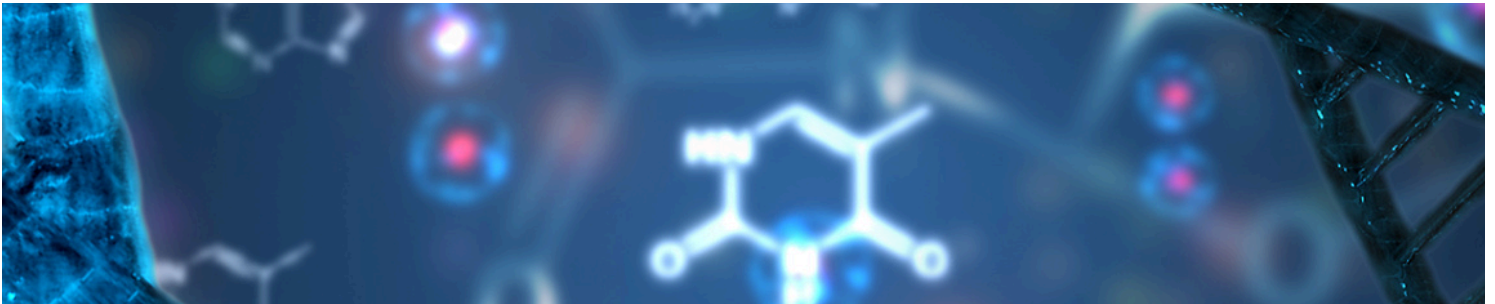
iGEN Prenatal & DNA/RNA Extraction Kits

Achieve high yield DNA/RNA extraction from a variety of types of samples. Specific kits are available for prenatal samples including amniotic fluid and chorionic villus.



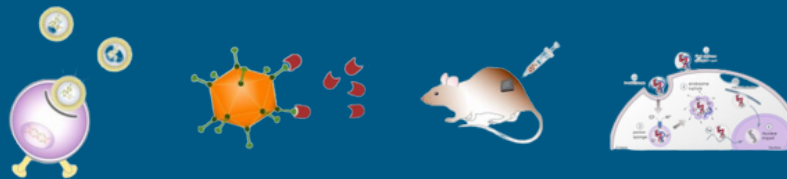
TRANSFECTION

www.bocascientific.com
(781)-686-1631
info@bocascientific.com



Magnetofection Transfection Reagents

Unique Oz Magnetofection transfection reagents available for DNA, siRNA and viral vectors including retroviruses and lentiviruses. These efficient transfection reagents are ideal for primary cells and hard to transfect cell lines. Highly efficient lipofection based transfection reagents are also available.



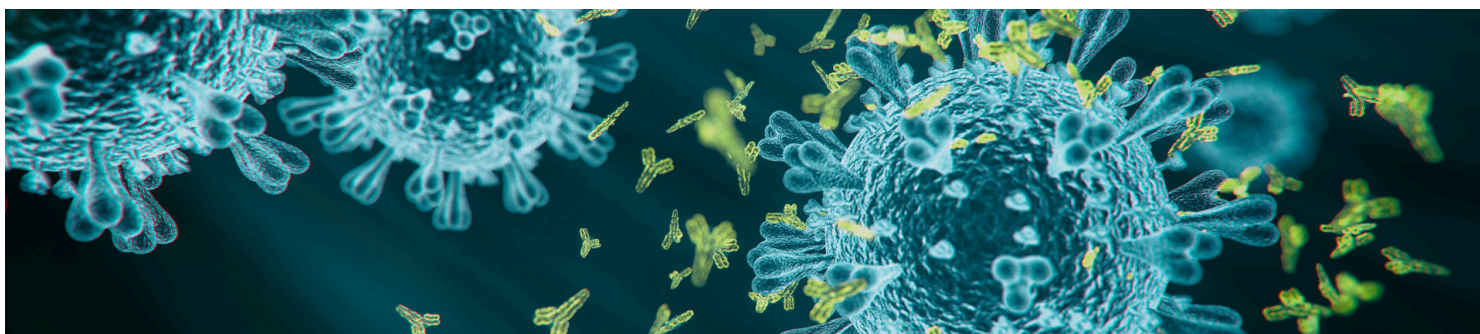
ScreenFect Transfection Reagents

ScreenFect transfection reagents efficiently transfect a variety of cells with minimal cytotoxicity. These reagents can be used for transfection of nucleic acid molecules (pDNA, siRNA, mRNA, miRNA) as well as co-transfection of combinations of these.



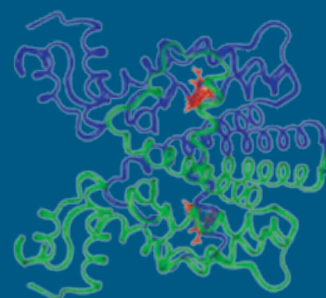
ANTIBODIES

www.bocascientific.com
(781)-686-1631
info@bocascientific.com



Anti-Tet-Repressor Antibodies

Polyclonal and monoclonal antibodies targeting the Tet Repressor protein for study of the TetR system. These antibodies possess excellent binding properties and have been successfully tested for use in ELISA, Western blot and immunofluorescence assays.



Phagemid Display System Antibodies

Anti-SPINK1 (hPSTI) is an antibody to human pancreatic trypsin inhibitor domain (hPSTI).

Monoclonal mouse **anti P III (g3p)** is an antibody to phage M13 coat protein pIII (g3p) monoclonal mouse IgG (Clone 10C3), Protein G purified.



***Small Molecule Antibodies and Tag/Control Antibodies also available.**

Agrisera Antibodies

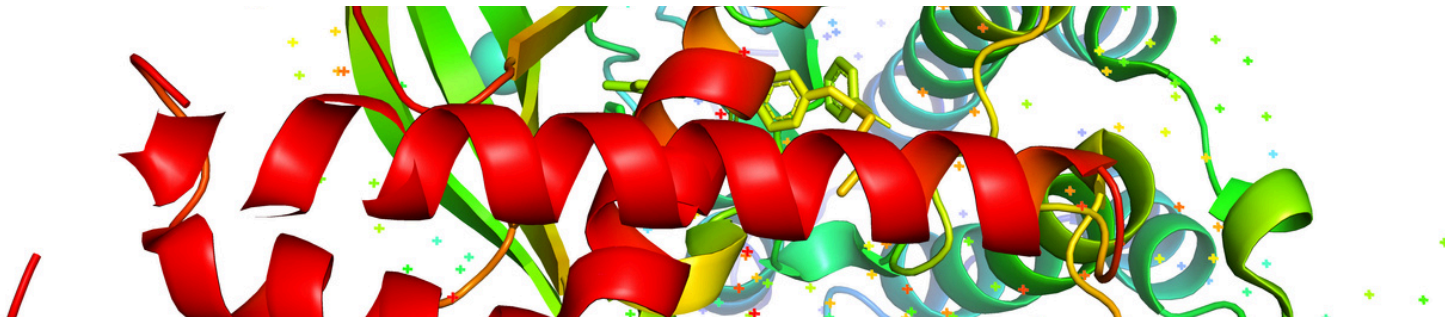
Agrisera provides off-the-shelf antibodies for plant and algal research, with reactivity to thousands of species. All antibodies have been validated in at least two independent laboratories and this product line has been cited in thousands of publications.

The Agrisera product line offerings include Plant & Algal, Human & Animal, Secondary, TAG, and Bacterial & Fungal antibodies.



PROTEIN MARKERS & DNA LOADING DYES

www.bocascientific.com
(781)-686-1631
info@bocascientific.com



Protein Markers and Ladders

Our protein markers contain ready-to-use, stabilized combinations of pre-stained proteins with a broad range of molecular weights. With sharp bands and easy visualization, these high quality protein markers are suitable for just about all protein applications.



DNA Loading Dyes and Stains

DNA loading and staining dyes are user-friendly, consistent and can be safely illuminated by LED blue light instead of damaging UV light, resulting in high levels of detection sensitivity.

RedSafe Nucleic Acid Staining Solution

RedSafe is a safer alternative to EtBr (ethidium bromide) for nucleic acid staining with equal sensitivity. This non-toxic, non-mutagenic, non-carcinogenic solution is used for detecting double-stranded DNA and single-stranded RNA.

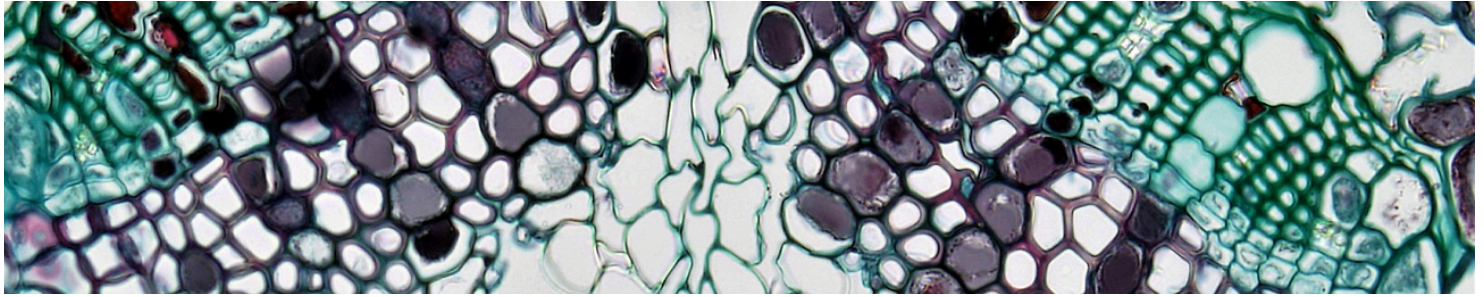


RedStar™ DNA/RNA Loading Dyes and DNA Ladders

Safer alternative to EtBr for nucleic acid staining with equal sensitivity. This non-toxic, non-mutagenic, non-carcinogenic solution is used for detecting double-stranded DNA and single-stranded RNA.



**We also offer a line of GRS DNA
Ladders!**



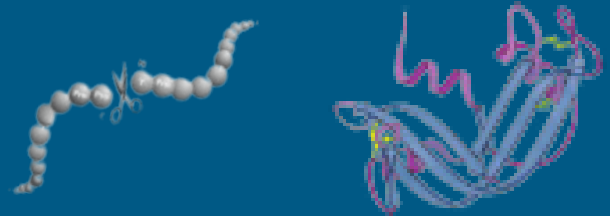
AquaBluer Fluorescent Redox Indicator

Redox indicator for cell viability and cytotoxicity assays.



MoBiTec Enzymes

High quality enzymes with high specificity and stability. Recombinant enzymes also available.



Infectious Serology Kits

Our selection of infectious disease kits include LIA and ELISA kits for a range of pathogens. These kits are primarily used with human serum or plasma and include highly specific recombinant antigens.

Types of Assay Kits Available:

- Borrelia
- EBV
- HHV-6
- Polyomavirus JC & BK
- VZV



See what our customers are saying...

I can't remember when I have dealt with a company with such great customer service. You know how to make a customer feel valued something that is becoming rare in today's world. - S.G.

We had such a positive experience ordering with you for our study - K.B.

You went above and beyond. I am very appreciative and very impressed with your diligence and efforts to be of service. Outstanding! - R.H.

This is one of the fastest quote-to-order-to-shipping services that I have got! - K.M.



Contact Us

781-686-1631

info@bocascientific.com

www.bocascientific.com

980 Washington St #220,
Dedham, MA 02026

