

BEST SELLER



XPERT FAST HOTSTART MASTERMIX WITH DYE

Extreme speed and performance.
Proven results with maximum simplicity

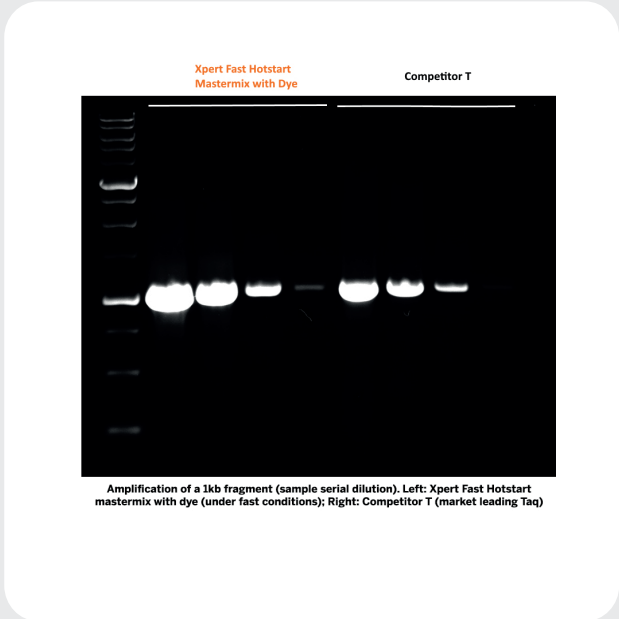


OPTIMIZED AND READY-TO-USE

- Supplied as a convenient mastermix with dye
- Simply add primers and sample. Included dye allows for direct running onto agarose gels

EXCELLENT AND FAST RESULTS

- Excellent amplification from GC and AT-rich sequences
- Superior amplification success rates, in both fast and standard cycling conditions
- 2 second extension time in fragments up to 1kb for ultra fast results



Xpert Fast DNA polymerase is also available as kit (with dNTPs included), mastermix, with and without hotstart.

CAT.NR.	DESCRIPTION	SIZE
GE45.0001	XPERT FAST HOTSTART MASTERMIX WITH DYE	1 mL
GE45.5001		5x 1 mL
GE45.0050		50x 1mL