

SUMMARY

shipped on blue ice; store at -20 °C

For research use only

Enzyme characteristics

Molecular weight: 28 kDa plus glycosylation
Isoelectric point: pI 5.1
pH-activity range: n.d.
T-stability: n.d.
Specific activity: n.d.
Substrates: RNA

Activity

≥18.6 U/μL

Unit definition

One unit of the enzyme causes an increase in absorbance of 1.0 at 260 nm in 15 minutes when yeast RNA is hydrolyzed at 37 °C and pH 4.5.

Absence of contaminants

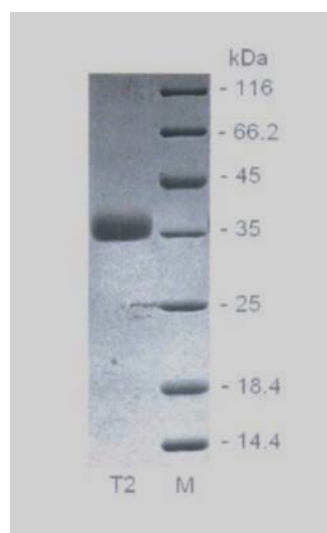
Tested for alkaline and acid phosphatases. 100 U of the enzyme were incubated with 1 mM p-nitrophenylphosphate for 2 h at 37 °C at various pH values.

pH = 4.0 <50 nU/μl
pH = 7.5 <50 nU/μl
pH = 10.0 <50 nU/μl

Recombinant ribonuclease T2 from *Aspergillus oryzae*. Dissolved in 15 mM Na-acetate pH 4.5, 100 mM NaCl, 50% glycerol.

Typical reactions

Cleavage of RNA



Order Information, Shipping and Storage

Order#	Product	Quantity
GE-NUC00400-01	Recombinant RNase T2	750 U
GE-NUC00400-02	Recombinant RNase T2	3000 U
shipped on blue ice; store at -20 °C		