



**SMOBio**

Small Bio, Smart Tool

## Product Information

ExcelRT™series

### ExcelRT™ One-Step RT-qPCR Kit

<b>RQ2110</b>	<b>200 RXN</b>	
	2X One-Step Master Mix (TaqMan, ROX)	2 x 1 ml
	One-Step RT Enzyme Mix	400 µl

## Storage

**Aliquot to avoid multiple freeze-thaw cycles**

**Protect from light**

-20°C for 12 months

## Features

- High specificity
- With ROX reference dye
- Suitable for fast program
- Reverse transcription at wide temperature range (42°C-60°C)

*We Bring The World Of Biotechnology To You*

 **BOCA  
SCIENTIFIC**

[www.bocascientific.com](http://www.bocascientific.com)

(781) 686-1631

[info@bocascientific.com](mailto:info@bocascientific.com)

## Description

The ExcelRT™ One-Step RT-qPCR kit (TaqMan, ROX) is designed for reverse transcription and quantitative real-time analysis of a specific target RNA by one-step reaction. The ExcelRT™ One-Step RT-qPCR kit (TaqMan, ROX), consisting of One-Step RT Enzyme Mix and 2X One-Step Master Mix, is a convenient kit designed for highly efficient cDNA synthesis and high specific real-time PCR in a single tube. The One-Step RT Enzyme Mix contains a thermostable ExcelRT™ Reverse Transcriptase and a RNAok™ RNase inhibitor. Consequently, One-Step RT Enzyme Mix can reverse transcribe RNA to cDNA at a wide temperature range from 42 to 60°C and be active against RNase A, RNase B and RNase C. By containing specialized hot-start *Taq* DNA polymerase, which greatly reduce primer-dimer formation and can be activated within 2 minutes, the 2X One-Step Master Mix features high specificity and is suitable for fast cycle program. This master mix includes ROX reference dye for normalization of each RT-qPCR assay.

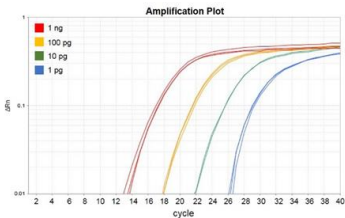


Fig. 1. ExcelRT™ One-Step RT-qPCR Kit can quantitatively analyze target RNA from a wide range of RNA template input. The amplification plot of one-step RT-qPCR with total RNA templates ranging from 1 pg to 1 ng in quantity, analyzed by using RQ2110 ExcelRT™ One-Step RT-qPCR Kit (TaqMan, ROX) for RT-qPCR amplification.

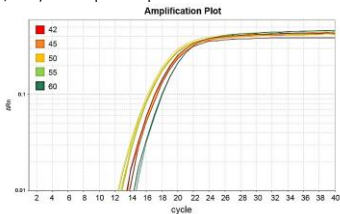


Fig. 2. ExcelRT™ One-Step RT-qPCR Kit can quantitatively analyze target RNA at a wide temperature range (42-60°C). The overlapped amplification plot of one-step RT-qPCR with reverse transcription at temperature range from 42 to 60°C, analyzed by using RQ2110 ExcelRT™ One-Step RT-qPCR Kit display that ExcelRT™ One-Step RT-qPCR Kit preforms successfully cDNA synthesis at wide temperature range.

## Instrument compatibility

- Applied Biosystems system:
  - 5700, 7300, 7000, 7700, and 7900HT system
  - StepOne™ / StepOne Plus™
  - QuantStudio™ 3 / 5/ 6 / 7
- BioRad system:
  - CFX96 / CFX384
  - Chromo 4™ Real-Time Detector
  - DNA Engine Opticon™ / Opticon™ 2
- Roche system:
  - Roche LightCycler® 480 / Nano
- Cepheid system:
  - Smart Cycler®
- Eppendorf system:
  - Mastercycler® ep realplex
- QIAGEN system:
  - Rotor-Gene™ Q

### Note:

1. Selection of fluorescent reporter dye of TaqMan probe should refer to optical detection system of instruction. ExcelRT™ One-Step RT-qPCR kit (TaqMan, ROX) is compatible with a variety of real-time instruments, including but not limited to the list above.
2. ExcelRT™ One-Step RT-qPCR kit (TaqMan, ROX) is high ROX reagent. Although it is compatible with a variety of real-time instruments, it loses the advantage of normalization provided by ROX when applying to no ROX or low ROX real-time instruments.

## **Recommended primer design**

- Amplicon size: 80-150 bp
- T<sub>m</sub> value: around 60°C (calculated with Primer3 software)
- Primer length: 17-25 mer
- Sequence:
  - 45-55% of GC content is recommended.
  - Avoid regional high GC or AT content
  - Avoid palindrome sequence
  - Sequence with G or C at the 3' end is recommended.
- Specificity of primers should be confirmed through a BLAST search.

## **Recommended probe design**

- T<sub>m</sub> value: 6-10°C higher than primers
- Probe length: 20-30 mer
- Sequence:
  - 35-65% of GC content is recommended.
  - Avoid regional high GC or AT content
  - Select the strand contains more C's than G's
  - Avoid palindrome sequence
  - Avoid a G at the 5' end to prevent quenching of the 5' fluorophore.
- Specificity of probe should be confirmed through a BLAST search.

## Recommended reaction mixture set up for qPCR

	volume	Final concentration
Template RNA	Varied	1 pg – 1 µg
Forward primer (10 µM)	Varied	125 – 900 nM
Reverse primer (10 µM)	Varied	125 – 900 nM
TaqMan Probe (10 µM)	Varied	100 – 200 nM
One-Step RT Enzyme Mix	2 µl	1X
2X One-Step Master Mix	10 µl	1X
ddH <sub>2</sub> O	Up to 20 µl	-
Total volume	20 µl	-

\*Template amount varies depending on the copy number of target present in the template solution..

\*\* The PCR primer and probe concentration for an optimal qPCR reaction may vary according to primers' and probe's properties.

## Recommended qPCR program

### standard

Step	Cycles	temperature	Time
Reverse transcription	1	42°C - 60°C ( 45°C- 55°C is recommended)	10 mins
Enzyme activation	1	95°C	3 mins
Denaturation	40-50	95°C	15 seconds
Annealing/ Extension		60°C	1 mins

( to be continued)

## Fast program

Step	Cycles	temperature	Time
Reverse transcription	1	42°C - 60°C ( 45°C- 55°C is recommended)	5 mins
Enzyme activation	1	95°C	20 seconds
Denaturation	40-50	95°C	3 seconds
Annealing/ Extension		60°C	30 seconds

## Other Information

SMOBIO Technology, Inc. claims all warranties with respect to this document, expressed or implied, including but not limited to those of merchantability or fitness for a particular purpose. In no event shall SMOBIO Technology, Inc. be liable, whether in contract, tort, warranty, or under any statute or any other basis for special, incidental, indirect, punitive, multiple or consequential damages in connection with or arising from this document, including but not limited to the use thereof.

Caution: Not intended for human or animal diagnostic or therapeutic uses.

## Related Products

RP1000	ExcelRT Reverse Transcriptase, 20,000 U
RP1100	ExcelRT One-step RT-PCR Kit, 50 RXN
RP1400	ExcelRT Reverse Transcription Kit II, 100 RXN
RI1000	RNAok RNase Inhibitor, 2000 U
TQ1100	ExcelTaq 2X Q-PCR Master Mix (SYBR, no ROX), 200 RXN
TQ1210	ExcelTaq 2X Fast Q-PCR Master Mix (SYBR, ROX), 200 RXN
TQ2110	ExcelTaq 2X Q-PCR Master Mix (TaqMan, ROX), 200 RXN
DM2300	ExcelBand 100 bp+3K DNA Ladder, 500 $\mu$ l
DM3100	ExcelBand 1 KB (0.25-10 kb) DNA Ladder, 500 $\mu$ l
DL5000	FluoroDye DNA Fluorescent Loading Dye (Green, 6 $\times$ ), 1 ml
NS1000	FluoroVue Nucleic Acid Gel Stain (10,000X), 500 $\mu$ l
PM2510	ExcelBand Enhanced 3-color Regular Range Protein Marker, 250 $\mu$ l $\times$ 2
TF1000	SMO-HiFi DNA Polymerase, 100 U $\times$ 1
TP1000	ExcelTaq Taq DNA Polymerase, 500 U $\times$ 1
TP1200	ExcelTaq 5X PCR Master Dye Mix, 200 RXN