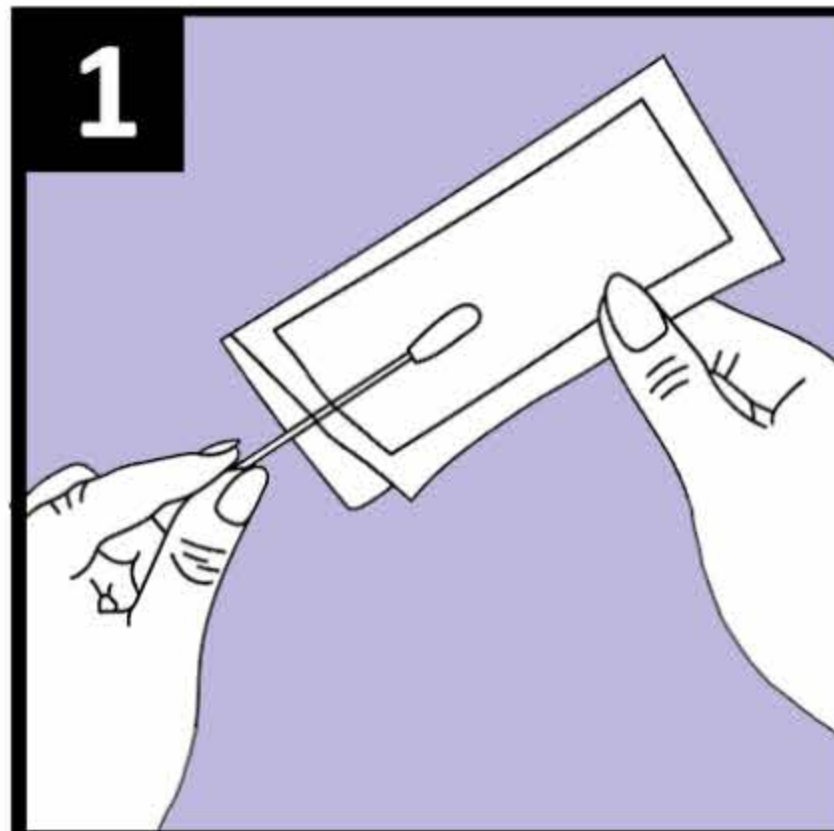
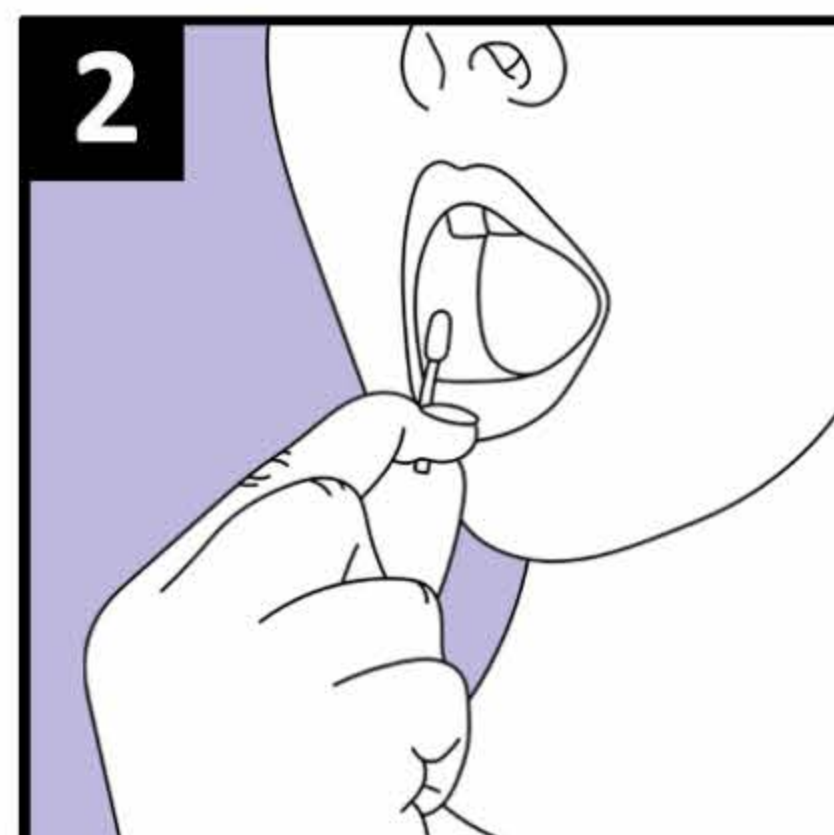


DO NOT eat, drink, smoke or chew gum for 30 minutes before use.

Read all instructions before collection. Intended for the collection and stabilisation of Human DNA from saliva.

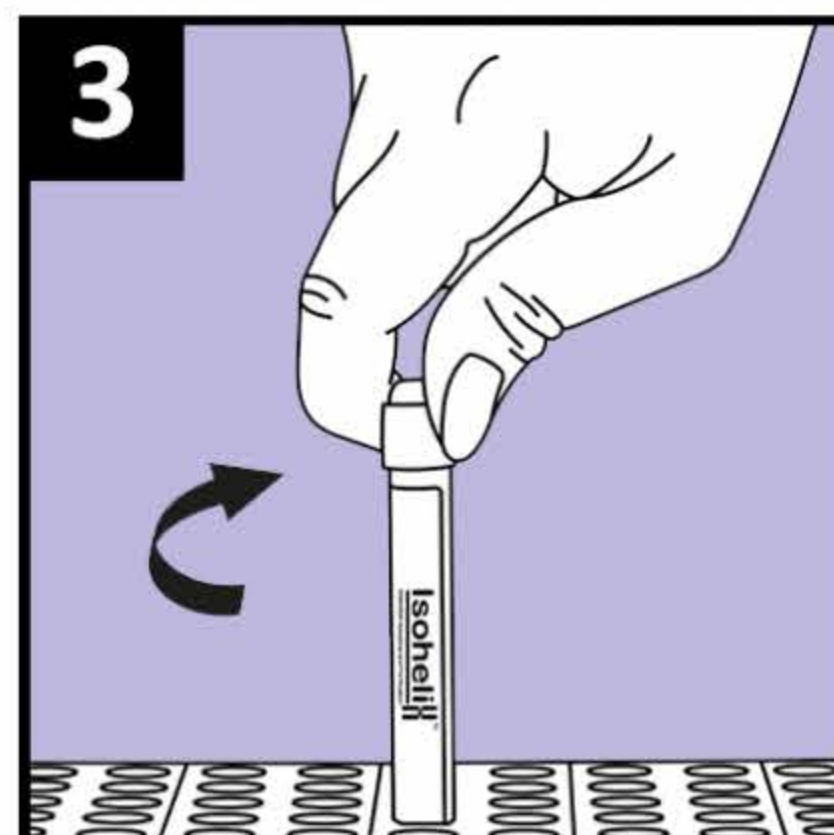


1. Pull open the swab wrapper and remove the swab, taking care not to touch the foam swab tip.

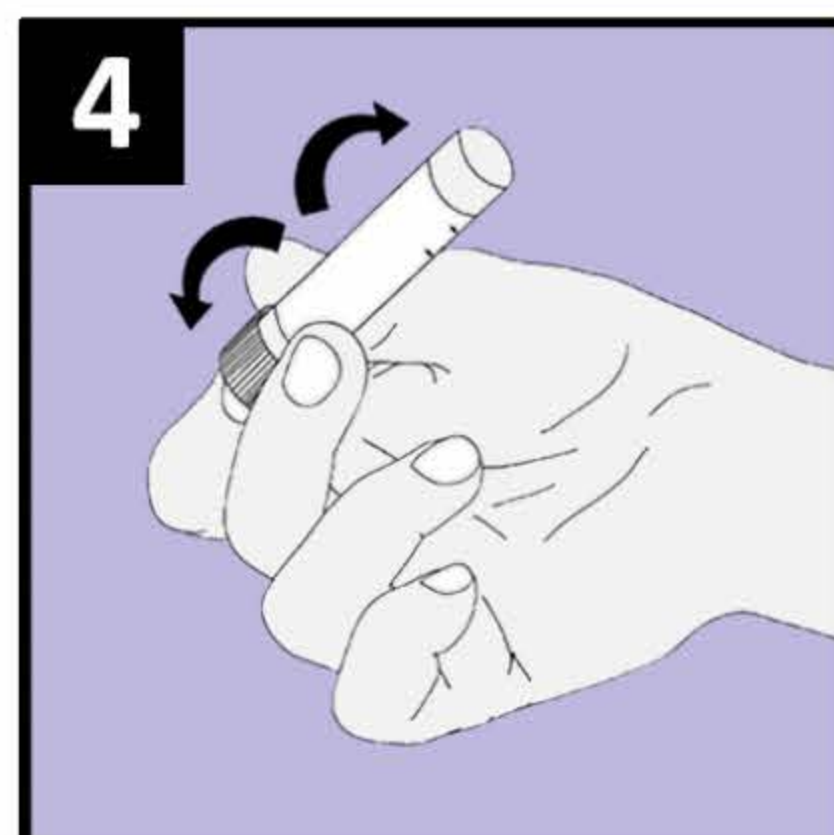


2. Insert swab into mouth and gently rub around the gumline at the front of the mouth for 30 seconds to collect saliva.

DO NOT - Chew, pull swab head, or use swab towards the back of the mouth.



3. Holding the collection tube upright, unscrew the cap and place the swab into the tube, taking care not to spill the stabilising solution. Replace the cap carefully on the tube and screw closed.



4. After replacing the cap, invert the tube and shake vigorously 10 times to mix the sample with the stabilising solution.

STORE SAMPLE AT ROOM TEMPERATURE AFTER COLLECTION

Precautions: Do not swallow liquid. If stabilising solution comes into contact with skin or eyes, wash with plenty of water. Tube cap and foam swab may be a choking hazard to small children.

For Research Use Only