

# Miracle AutoXT Quick guide

This manual contains the minimum information to use. Be sure to check this user guide before using the Miracle AutoXT.

## 1. Name of each part



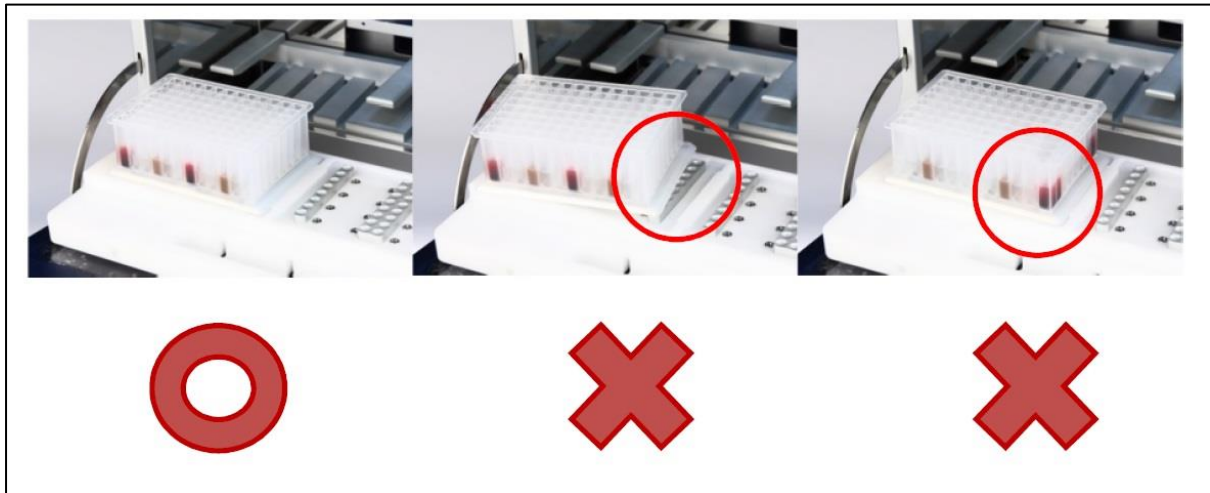
## 2. Components

1. The equipment components are as follows.
  - a. Equipment Manual
  - b. Power cable
  - c. Other consumables (plate, strip)

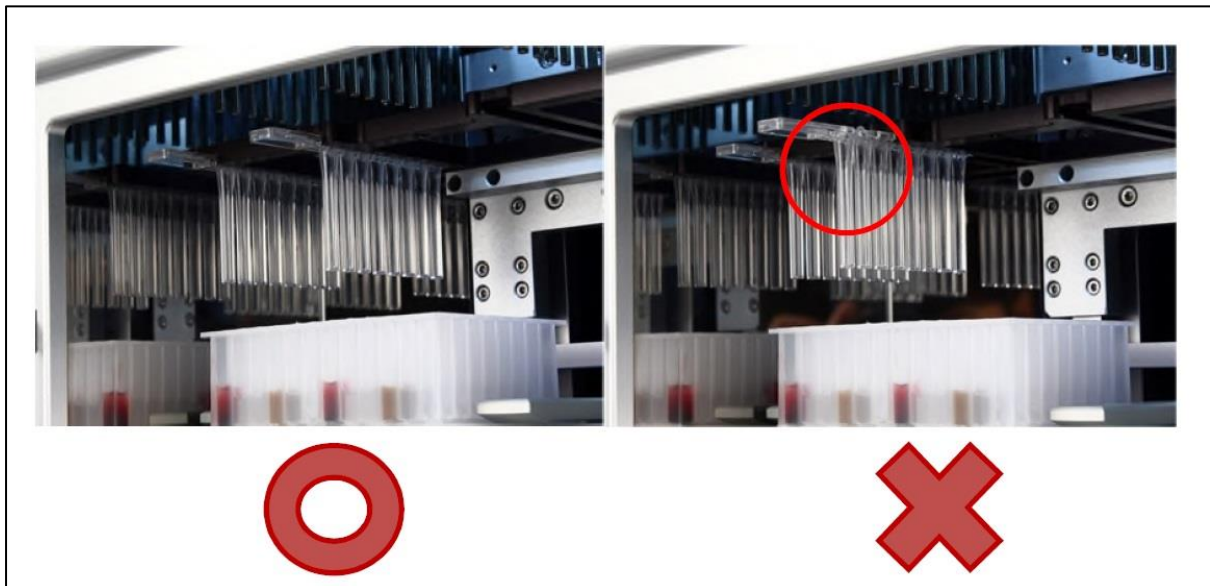


### 3. Mounting method

1. Be careful when inserting the plate into the instrument. Keep the plate as close as possible to the bottom of the unit.

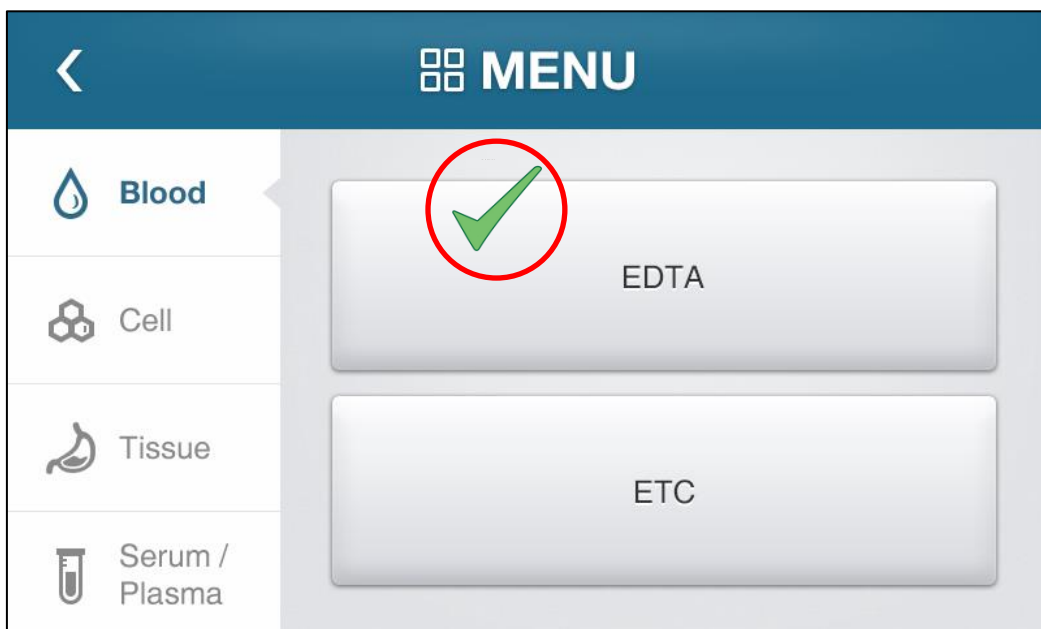
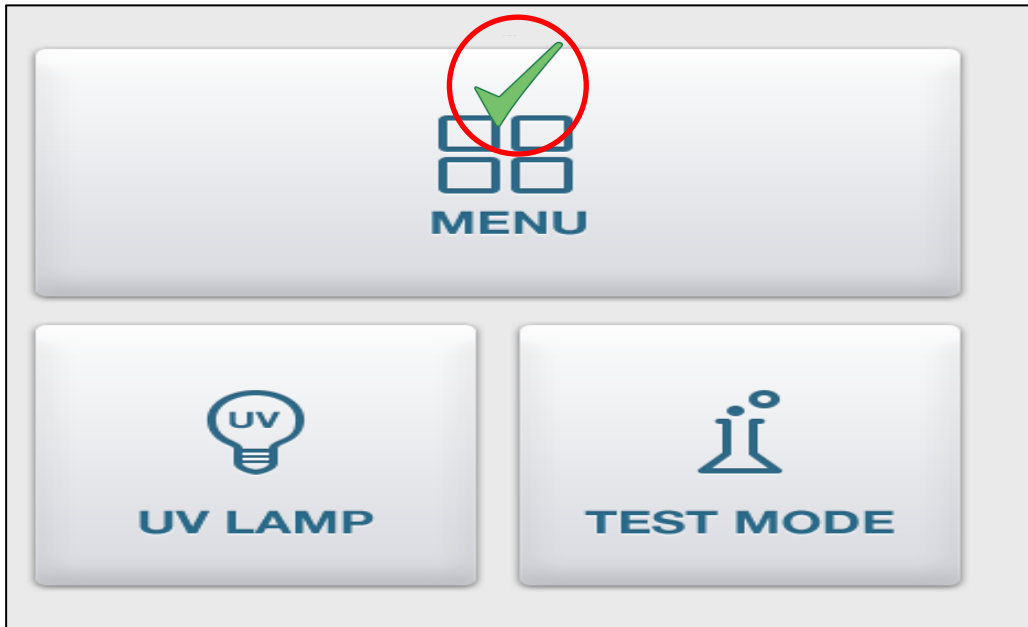


2. Push the individual strip all the way in until it clicks.



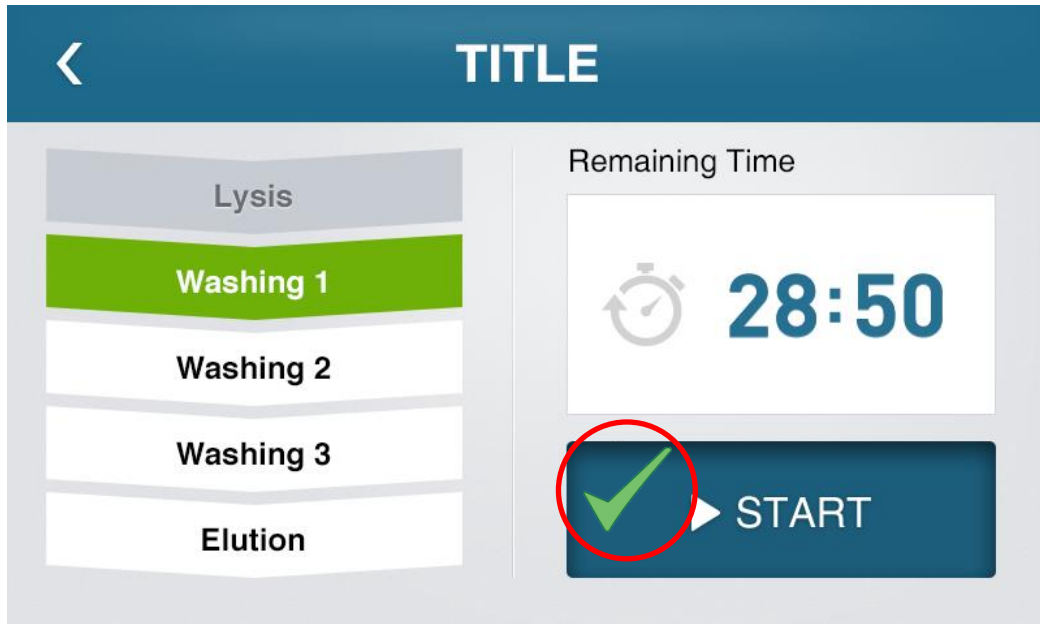
## 4 Select Menu

1. Once the plate and strip are properly seated, close the front door and select the menu to be inspected.



## 5. Start extraction

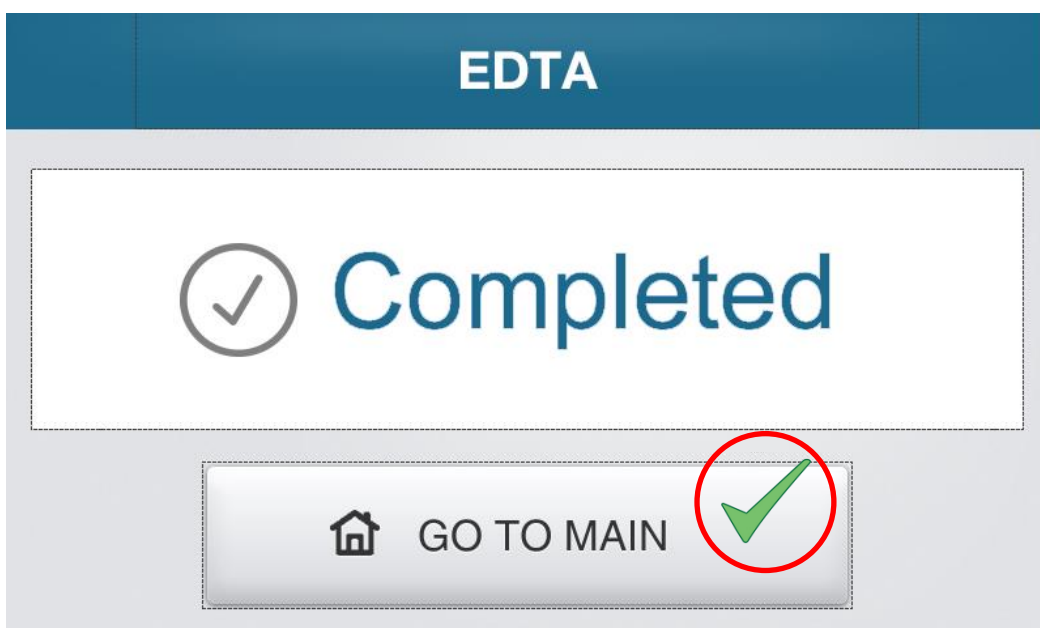
1. When all is ready, press "START" to start extraction.



## 6. Finish extraction

1. When extraction is complete, a notification tone will be displayed along with alarm.
2. Press "Go To Main" button to end the beep. At the same time, you will return to the initial screen.

(\* The alert tone will sound for the first 3 minutes, then it will turn off automatically.)



## 7 UV-LAMP method

1. Close the front door and select UVLAMP on the initial screen by pressing the button.
2. After setting the time, press the "START" button to turn on UVLAMP.
3. To set the time, press the "EDIT" button on the screen and then press "SAVE".

