



Product Information

MGM01 MobiGLOW Mounting Medium

Microscopy Mounting Medium

General Description

MobiGLOW is a mounting medium for immunofluorescence microscopy. Its new formula stabilizes fluorochromes and substantially decreases bleaching. Successfully tested fluorochromes are e.g. fluorescein (FITC), Texas Red, CY3 and DAPI and many dyes under UV radiation. This results in prolonged gleaming signals and higher contrast of the images. Another innovation of MobiGLOW is its property to gently solidify after the attachment of the cover slip. This feature a) conserves the cells in their permanent appearance and b) permanently fixes the cover slip. Thus, the use of nail polish for immobilization is no longer necessary. These benefits make MobiGLOW the tool of choice to get the finest images from your precious immunofluorescences. For your convenience, MobiGLOW comes in an easy-to-use pipet flask.

Protocol

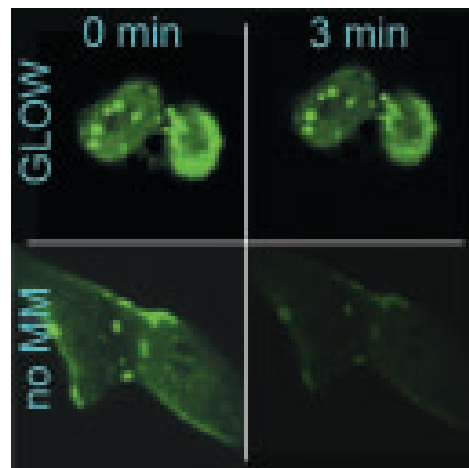
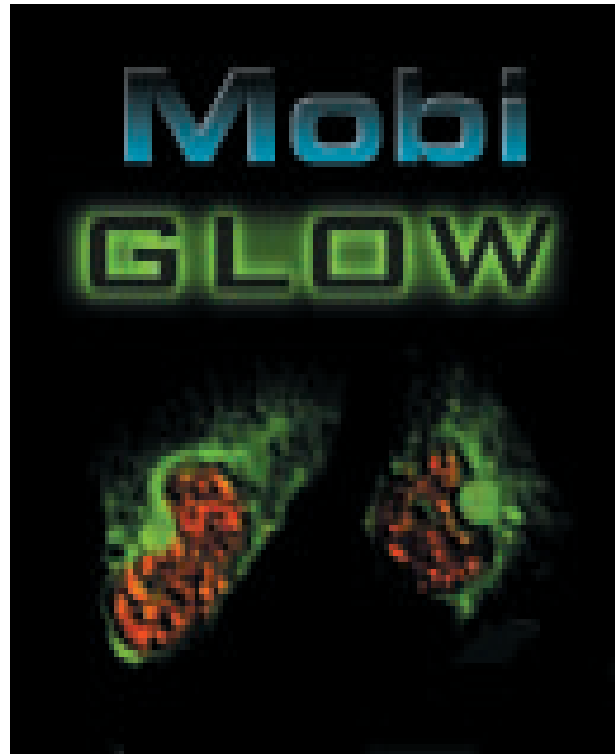
Mounting Slides:

- Remove excess liquid from the tissues or cells on the slide.
- To mount, dispense one small drop of MobiGLOW Mounting Medium onto the section. Then coverslip the slide and allow the MobiGLOW solution to disperse over the entire section. Do not apply an excess of mounting medium.
- Investigate your slides immediately or store them at 4°C in the dark for later use.
- MobiGLOW will slowly solidify within a few hours starting at the edge of the coverslip. This prevents the cells from drying out and permanently immobilizes the cover slip. Store slides at 4°C in the dark.

General Considerations

- Although the pipet bulb is made of inert material it is suggested to keep the bottle in an upright position to allow drainage of the bulb.
- Store the bottle at 4°C in a dark place. If you keep MobiGLOW for a prolonged time (> 4 weeks) it is strongly recommended to aliquot the volume and store it at -20°C in tightly sealed caps to avoid polymerization.
- After thawing you may warm the vial with your hand or in water at 37°C. MobiGLOW remains viscous. For more easy pipetting you may cut the pipette tip.

MobiGLOW is stable at 4°C in a dark place for about 4 weeks. For long-term storage please make aliquots and store them at -20°C.



Confocal images of FITC-stained cells after 0 and 3 minutes with and without MobiGLOW: MobiGLOW clearly stabilizes the fluorophore.

Order Information, Shipping & Storage

order #	description	amount
MGM01	MobiGLOW Mounting Medium	10 ml

shipped at RT; store at 4°C or aliquoted at -20°C.